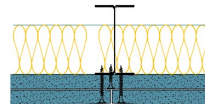
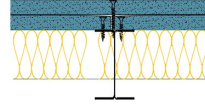


## TWI70-S-60(2x50)(210) - SPEEDLINE System Data Sheet - Version V1 (24-10-23)

Twin SPEEDLINE 70mm 'I' Stud Partition @600mm Ctrs, with 2x Siniat GTEC 15mm dB Board each side, 50+50mm APR



### System Performance Breakdown

Fire Resistance:

BS476 Part 22:1987:

Test Ref & Date or Applied Ref & Report:

Max Height:

Thickness:

Duty Grade: BS 5234: Part 2:1992:

Sound Insulation:

90/90 Minutes (Integrity/Insulation).

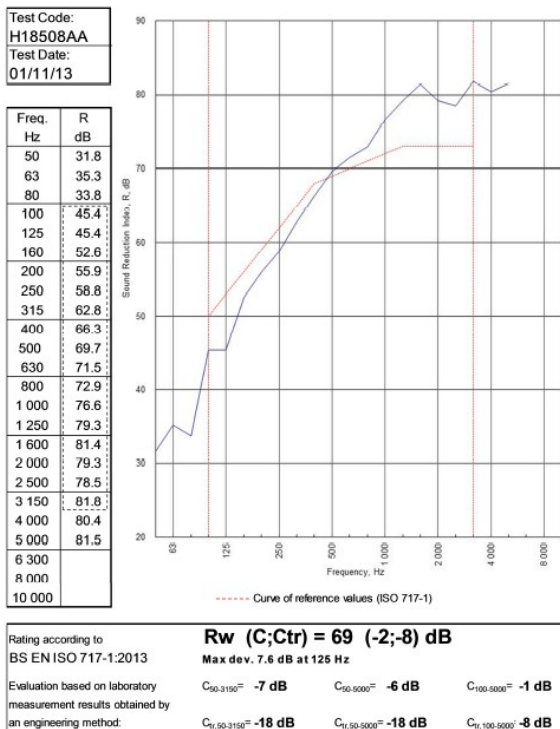
**BRE-P100456-1085 - BRE Report P102396-1011C**

Refer to Speedline Specification Clause

**210 mm.** (At Base Track, Excluding Finishes)

**Severe - Annexes A-F**

**69  $R_w$ dB, -8Ctr** Date Tested or Assessed Against - TWI50-S-60(2x50)(200)



TESTED AT ONE OF THE UKAS ACCREDITED LABORATORIES BELOW

B.T.C (H-Ref on Graph)	
B.R.E	
AIRO	
S.R.L	

Customer: Metsec plc Hepsec Division

BTC 18508A: Page 9 of 12

